

Saltford C of E Primary

WELCOME TO OUR SCHOOL





Vision and Values



Our core values are:

Respect

Honesty

Kindness

At Saltford School we know that children have the right to be provided with a creative, innovative and exciting education that will inspire them to become lifelong learners who are enthusiastic and proud of everything they do. We want every child to excel in all aspects of their learning within an immersive, imaginative, expressive and inclusive environment. We want children to become confident discoverers, explorers and creators who live our Christian values.

We keep children as the focus of everything we do.



The History of Saltford School

The first school in Saltford was founded in the middle of the 19th Century. It was called Queen's School and was held in the building which is now St Mary's Church hall. This was a Church school and our links with St Mary's Church remain close and important.

At first there was just one class in this school but, when numbers reached 108, a second class was started! Attendance was not always good. This was especially so in the summer when many children would need to help their families with the harvest in what was still a very rural community.

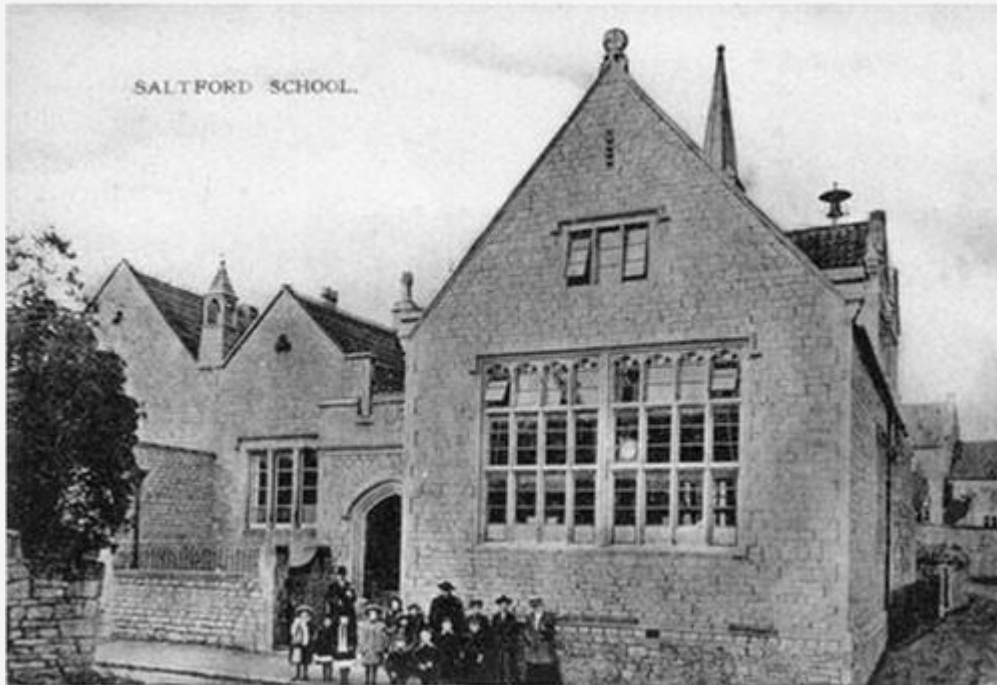
The early curriculum was mainly grammar, spelling, arithmetic and geography. Photographs from the early 20th Century show a uniform of pinafores for the girls and Eton collars for boys.

By 1960 the old building was becoming too small for the growing numbers of children and the infants were relocated to Ellsbridge House. Our current school building was built in 1962 but the four 'temporary' classrooms erected the following year remained in use until our new extension was opened in 2017.



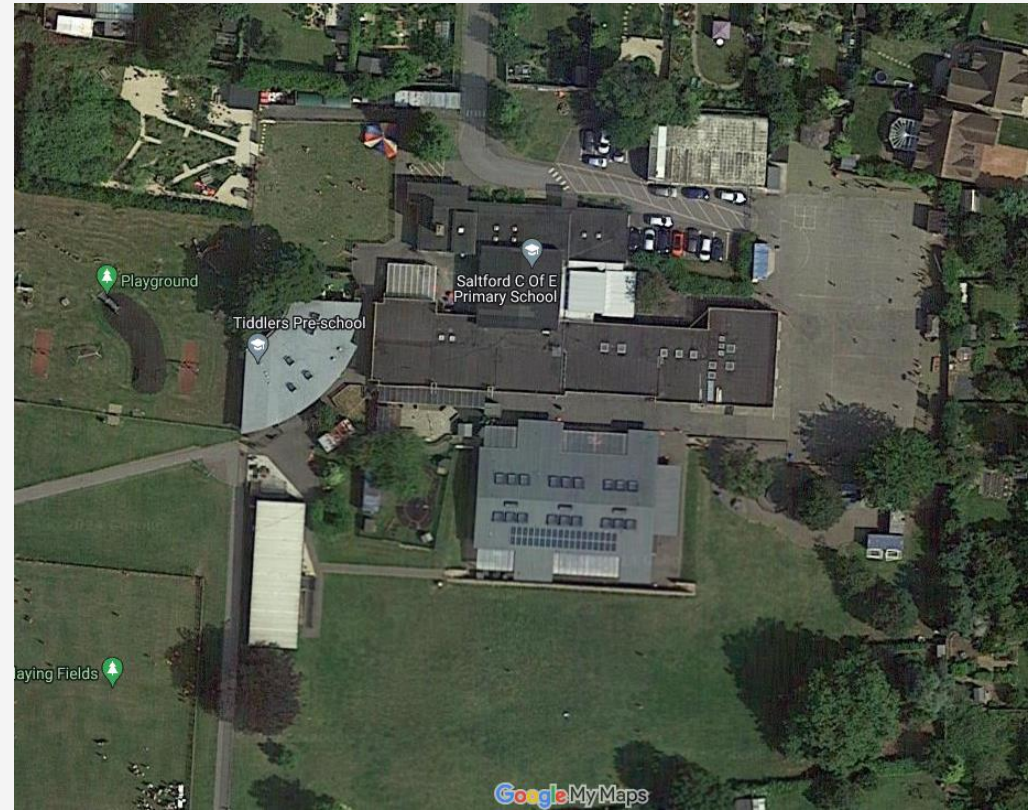
Some historic photos of old Saltford School

These photos were taken in the early 1900s





Aerial photos of the school in the 1970s and now

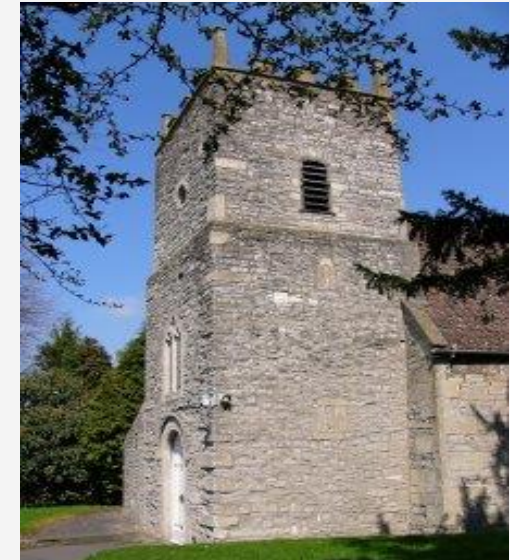




St. Mary's Church



Dating from Norman times, St. Mary's Church is at the heart of our community and is closely linked with Saltford School. Every class visits the church and Reverend Nigel regularly joins us at Saltford School for our collective worship and festivals.





Our place in Futura

We are really lucky to be part of Futura Learning Partnership. It helps us in many ways. We have enjoyed doing things with or at other schools like sports activities and science lessons. Our teachers work together to help make learning better for all of us.





A Day in the Life of a Pupil

In the morning, we have our English and Maths lessons.



In the afternoon we do our foundation subjects.

We can earn Dojo points through taking responsibility for our learning and behaviour.

We enjoy our playtimes with lots of space, equipment and a healthy snack.

When we arrive at school, we help to set up our classroom and complete a morning challenge to get us ready for the day.

Every day, we eat our lunch in the hall. The KS2 children help the reception children.

At the end of the day, we say goodbye and look forward to learning and playing with our friends the next day.

School Starts





Our school grounds



Our new 'Crafty Corner'



Our new outdoor stage



Remembrance service on our playground



Our beautiful 'secret garden'



Our amazing field used for sports day and matches!



Saltford School Grounds



We love our sandpit



We have lessons outside when the weather is nice.



We are lucky to have two fields.





Saltford School Grounds





Our Curriculum

We learn about many different subjects at school, as well as having some special weeks when we have an important focus to think about. We are lucky to enjoy lessons in art, computing, design and technology, English, geography, history, maths, music, PE, PSHE, RE, Science and (in KS2) French.





In EYFS

We have two classes called Bumblebees and Butterflies.

We love:

Superheroes, Making new friends, bikes, building blocks, cars, singing and phonics!

Here are some photos of some of the fun we have!



Dressing up as penguins



Mark making



Mud kitchen



Junk modelling



First hand experiences and local trips



Fine motor skills

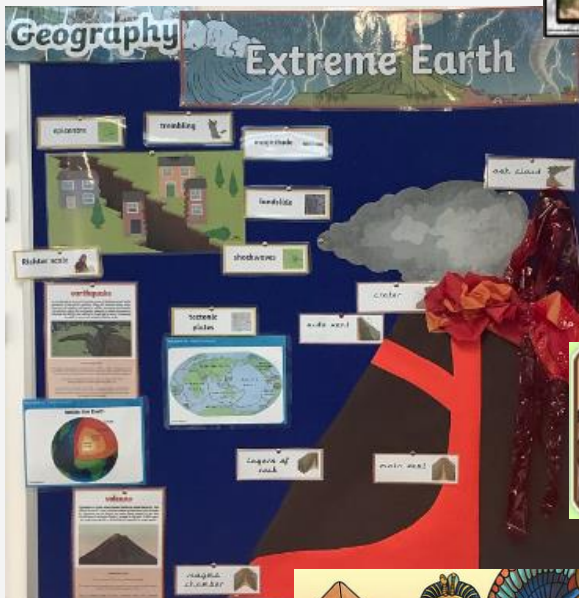


Finding out about the World we live in



Topics

We study lots of different and interesting topics at Saltford School. Here are a few:





People who help us

We are so lucky to have so many skilled adults that work with us every day. We also have lots of volunteers who come in to help listen to readers and help us learn new things.





Enhancing learning through educational trips and visitors

We are lucky to have lots of visitors into our school to teach us about our exciting topics.

We go on lots of trips too!





Camp

At Saltford we go on camp in Year 4 to Barton Camp (1 night), Year 5 to Mill on the Brue (2 nights), and Year 6 to Okehampton (4 nights).

Gorge Scrambling

Archery



Cycling



Weasling



Climbing



Raft building



Sledging





School life



At Saltford School, we give all our children the opportunity to be involved in many different clubs and teams. These include:

- **School Council:** our school council plays a very active role in the life of Saltford School ensuring that the children's views are shared and acted upon. Two representatives from each class (Year 1 to Year Six) are chosen by the children in September. They attend meetings either together or as separate Key Stages with Mrs Spincer.
- **House System:** our House system plays a very active role Saltford life and it allows children to develop their leadership skills. A Captain and a Deputy for each house are voted on by the children every year. Our houses are Goldfinches, Owls, Robins, Woodpeckers.
- **Green Team:** green team is full of people who are interested in looking after the environment and growing things and who like being outdoors.
- **E-Team:** E is for equality. We have established an E-team to ensure that everyone is treated equally and fairly, and no-one is left out or discriminated against.
- **Digital Leaders:** Digital leaders support ICT and computing across the school and in the community.
- **Wow Team:** Bringing God's message to our assemblies.
- **Craft Club:** We have an area on the playground to use at break times.





Music at Saltford

At Saltford, we take great pride in our music, singing and productions. Here are some pictures:





Sport

Our focus in Physical Education (PE) is to provide every pupil with the opportunity to develop his/her capabilities to the full, which in turn leads to the development of positive attitudes to taking part in physical activity.

We develop our skills and apply these to new sports and games. We pride ourselves on teamwork, sportsmanship and always trying our best.

We are very lucky to have our own swimming pool and we all get the opportunity to swim regularly throughout the year. We know it is this an extremely valuable skill that all children should have the opportunity to master.

We love taking part in local competitions and events and are very lucky to partner up with our local secondary school who run activities for all year groups throughout the year, giving the children an opportunity to try different sports that they may not have taken part in before.





SCHOOL CLUBS

At Saltford School we have the opportunity to enjoy many different clubs which are held during the school day or after school including: Recorder, STEM Club, Chess Club, Spanish Club, Forest School, Art Club and many more!



British Values



At Saltford we are very proud of the diverse range of activities on offer which promote the British values of democracy, the rule of law, individual liberty and mutual respect, and tolerance of those with different faiths and beliefs.

We are an inclusive school where everyone is welcome!



Thank you for your interest!
